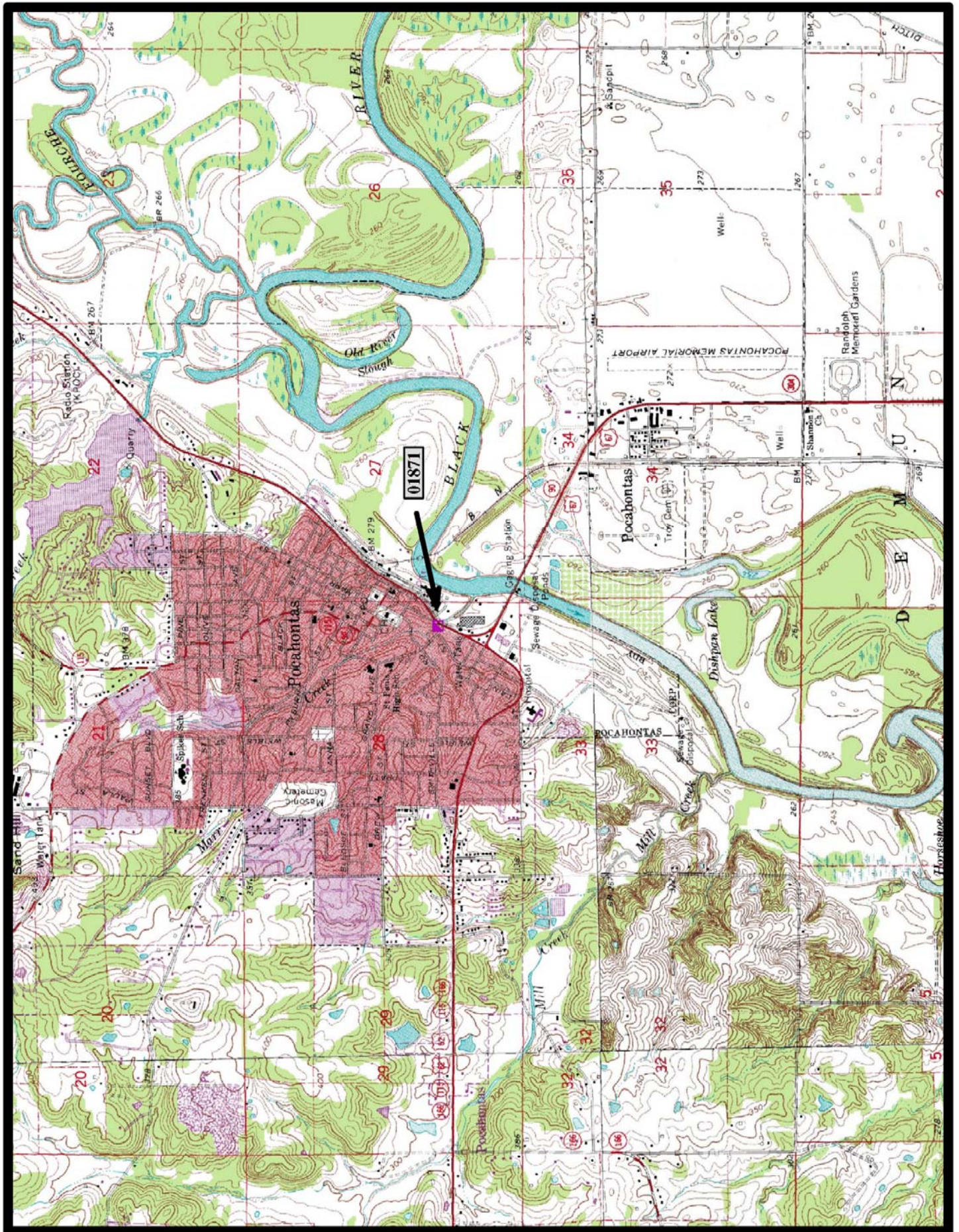




**PRESERVED HISTORIC BRIDGE #01871**  
**BYPASSED SECTION OF US HIGHWAY 67**  
**RANDOLPH COUNTY**  
**CONCRETE ARCH, DECK -OPEN SPANDREL**  
**CROSSES - MARR CREEK**  
**DATE OF CONSTRUCTION - 1934**  
**BUILDER - LUTEN BRIDGE COMPANY, LITTLE ROCK, AR**  
**HISTORIC BRIDGE INVENTORY DATE - 2005**  
**SHPO NUMBER - RA0109**  
**HAER NUMBER -**  
**DATE LISTED ON NATIONAL REGISTER - 1/24/2008**  
**LAT./LONG. 36:15:29.03, -90:58:19.29**

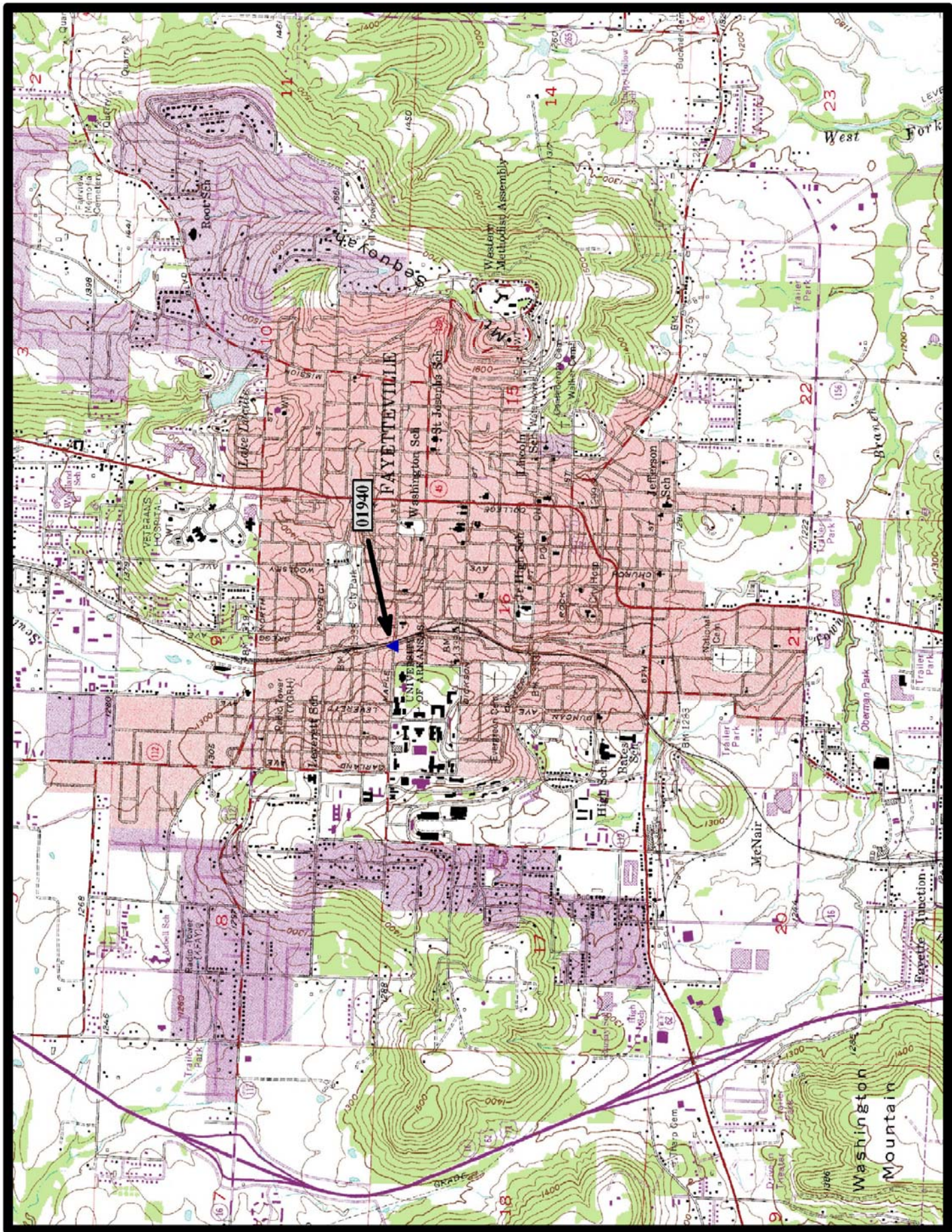


↑  
North

Pocahontas 7.5 min. Quad



**HISTORIC BRIDGE #01940**  
**MAPLE STREET**  
**WASHINGTON COUNTY**  
**CONCRETE ARCH, DECK - OPEN SPANDREL**  
**CROSSES - BURLINGTON RAILROAD**  
**DATE OF CONSTRUCTION - 1936**  
**BUILDER - FRED LUTTJOHANN, TOPEKA, KS**  
**HISTORIC BRIDGE INVENTORY DATE - 1995**  
**SHPO NUMBER - WA0795**  
**HAER NUMBER - AR-68**  
**DATE LISTED ON NATIONAL REGISTER - 5/26/1995**  
**LAT./LONG. 36:04:12.37, -94:10:00.94**

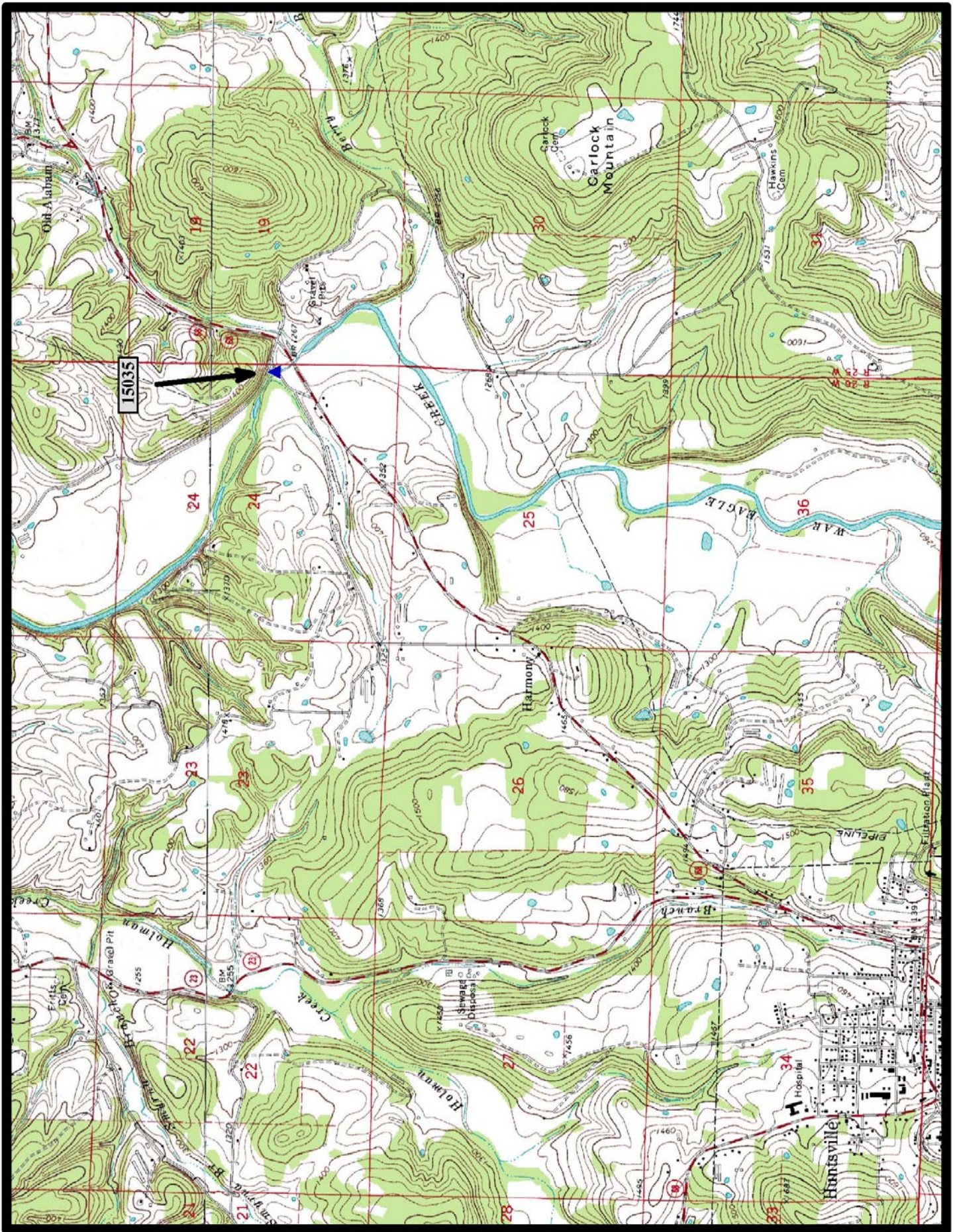


North

Fayetteville 7.5 min. Quad



**HISTORIC BRIDGE #15035**  
**COUNTY ROAD 264**  
**MADISON COUNTY**  
**CONCRETE ARCH, DECK - OPEN SPANDREL**  
**CROSSES - WAR EAGLE CREEK**  
**DATE OF CONSTRUCTION - 1926**  
**BUILDER - MEYER & GREENWALD CONSTRUCTION COMPANY, MONROE, LA**  
**HISTORIC BRIDGE INVENTORY DATE - 2005**  
**SHPO NUMBER - MA0078**  
**HAER NUMBER -**  
**DATE LISTED ON NATIONAL REGISTER - 1/24/2008**  
**LAT./LONG. 36:07:17.88, -93:41:38.54**

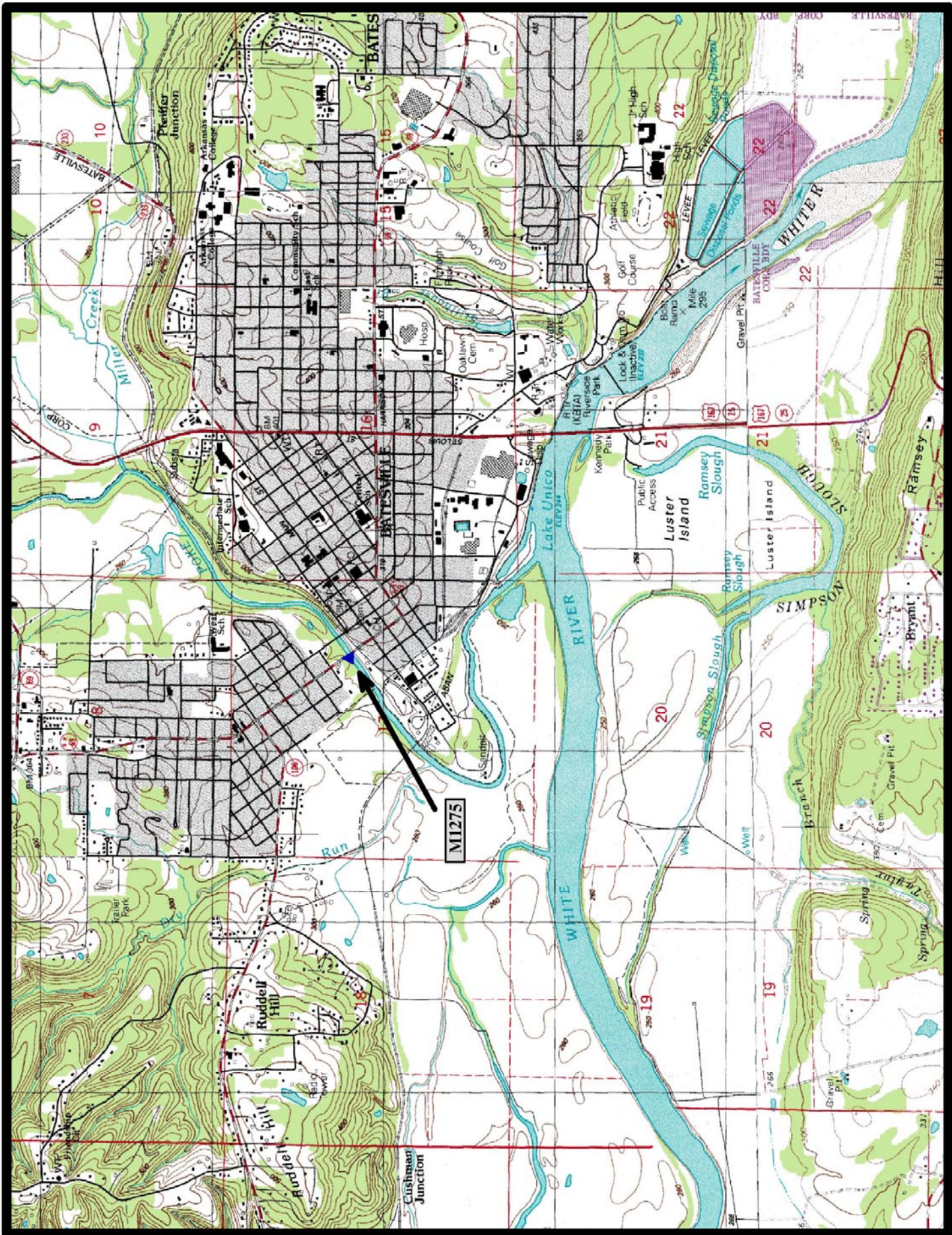


↑  
North

Forum, Huntsville 7.5 min. Quads



**HISTORIC BRIDGE #M1275**  
**STATE HIGHWAY 69**  
**INDEPENDENCE COUNTY**  
**CONCRETE ARCH, DECK - OPEN SPANDREL**  
**CROSSES - POLK BAYOU**  
**DATE OF CONSTRUCTION - 1930**  
**BUILDER - LUTEN BRIDGE COMPANY, LITTLE ROCK, AR**  
**HISTORIC BRIDGE INVENTORY DATE - 2005**  
**SHPO NUMBER - IN0260**  
**HAER NUMBER -**  
**DATE LISTED ON NATIONAL REGISTER -**  
**LAT./LONG. 35:46:16.37, -91:39:19.11**



↑  
North

Batesville, Forum 7.5 min. Quads